

# STUDENT SUCCESS AT THE CORD



UNIVERSITY OF  
ARKANSAS



# BUILDING BLOCKS OF SUCCESS

## Intellectual Virtues

Courage

---

Perseverance

---

Carefulness

---

Honesty

---

Curiosity

---

Fair-mindedness

---

Humility

---





An introduction to building blocks of student success to help with academic and social confidence.



An introduction to campus partners and resources.



A safe space to ask questions and connect with students, faculty, and staff in a small class setting.

# First-Year Seminar Courses



## Tutoring



Tutors clarify course content, demonstrate how to solve problems, and provide an individualized experience to students in over 150 university courses through appointments, drop-ins, and Study Halls.

## Writing Studio



Writing Studio consultants offer feedback on students' writing at any stage in the writing process and help students improve their academic writing skills.

## Academic Coaching



Peer academic coaches help students elevate their academic performance by identifying and developing academic skills and strategies for learning efficiently and effectively.

## Supplemental Instruction



For select historically challenging courses, SI offers weekly, collaborative study sessions facilitated by students who have excelled in the course and want to share their expertise.

# OTHER CORD RESOURCES

## Welcome Desk



Student employees are always ready to help with campus navigation, course enrollment, Blackboard support, and more.

## Exploration Coaches



Exploration Coaches offer holistic major exploration support in one centralized location, so students don't have to visit multiple offices to get the guidance they need.

## ASAP | 360



Designed for first-generation and Pell eligible students, these programs provide one-on-one staff support and peer mentoring to assist with academic transition, financial planning, social engagement and wellness.





# WHAT ELSE IS IN THE CORD?

## Career Studio



The Career Studio provides one-on-one and group advising/coaching for some of the Office of Career Connections' most popular services, including resume and cover letter reviews, interview tips and mock interviews.

## Starbucks & The Drove



The Drove serves quesadillas, smoothie bowls, and ramen to fuel you while you study! There is also a Starbucks to keep you caffeinated. Both are located on the ground level of the CORD.

## Academic Advising



All academic advisors for COEHP & Fulbright are housed at the CORD, providing a centralized location for academic advising appointments and support.



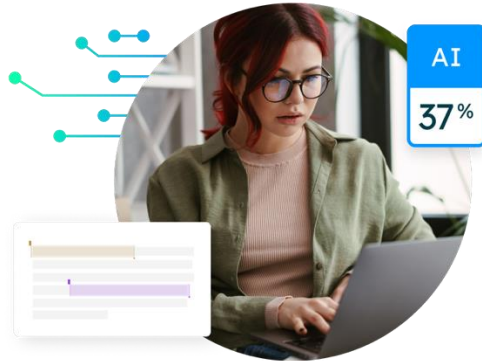


## Find your space



Visit the libraries, the  
CORD, the Union and  
more to discover a space  
you love for designated  
studying!

## Get to know “turnitin”



Familiarize yourself with  
academic integrity policies  
and commit early to doing  
your best work!

## DABA



Engage with DABA  
(Destination Arkansas  
Blackboard Assignment) on  
Blackboard!

## Build your support network early



Connect with tutors,  
coaches, advisors, and  
mental health resources in  
the first few weeks of the  
semester!

# ACTION STEPS FOR SUCCESS

# CONNECT @ the CORD!

## CONTACT INFORMATION



[success.uark.edu](https://success.uark.edu)



[success@uark.edu](mailto:success@uark.edu)



479-575-3174



@UARKSuccess



Visit the CORD

