

STUDENT SUCCESS AT THE CORD



UNIVERSITY OF
ARKANSAS

BUILDING BLOCKS OF SUCCESS

Intellectual Virtues

Courage

Perseverance

Carefulness

Honesty

Curiosity

Fair-mindedness

Humility





An introduction to building blocks of student success to help with academic and social confidence.



An introduction to campus partners and resources.



A safe space to ask questions and connect with students, faculty, and staff in a small class setting.

First-Year Seminar Courses



Tutoring



Tutors clarify course content, demonstrate how to solve problems, and provide an individualized experience to students in over 150 university courses through appointments, drop-ins, and Study Halls.

Writing Studio



Writing Studio consultants offer feedback on students' writing at any stage in the writing process and help students improve their academic writing skills.

Academic Coaching



Peer academic coaches help students elevate their academic performance by identifying and developing academic skills and strategies for learning efficiently and effectively.

Supplemental Instruction



For select historically challenging courses, SI offers weekly, collaborative study sessions facilitated by students who have excelled in the course and want to share their expertise.

OTHER CORD RESOURCES

Welcome Desk



Student employees are always ready to help with campus navigation, course enrollment, Blackboard support, and more.

Exploration Coaches



Exploration Coaches offer holistic major exploration support in one centralized location, so students don't have to visit multiple offices to get the guidance they need.

ASAP | 360



Designed for first-generation and Pell eligible students, these programs provide one-on-one staff support and peer mentoring to assist with academic transition, financial planning, social engagement and wellness.



WHAT ELSE IS IN THE CORD?

Career Studio



The Career Studio provides one-on-one and group advising/coaching for some of the Office of Career Connections' most popular services, including resume and cover letter reviews, interview tips and mock interviews.

Starbucks & The Drove



The Drove serves quesadillas, smoothie bowls, and ramen to fuel you while you study! There is also a Starbucks to keep you caffeinated. Both are located on the ground level of the CORD.

Academic Advising



All academic advisors for COEHP & Fulbright are housed at the CORD, providing a centralized location for academic advising appointments and support.



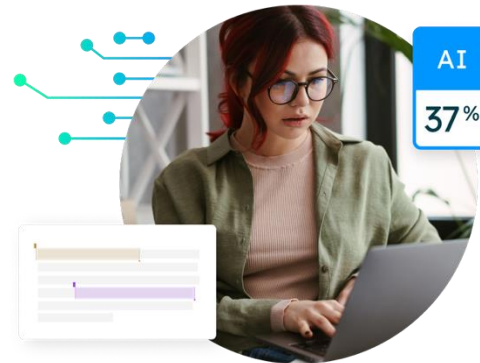


Find your space



Visit the libraries, the CORD, the Union and more to discover a space you love for designated studying!

Get to know “turnitin”



Familiarize yourself with academic integrity policies and commit early to doing your best work!

Build your support network early



Connect with tutors, coaches, advisors, and mental health resources in the first few weeks of the semester!

ACTION STEPS FOR SUCCESS

CONNECT @ the CORD!

CONTACT INFORMATION



success.uark.edu



success@uark.edu



479-575-3174



@UARKSuccess



Visit the CORD

